



FROM AUTHENTICATION TO ANALYTICS: IAM AND BI IN HIGHER ED'S DATA REVOLUTION

Heidi Thompson, Kait Wilcox

Grinnell College



IDENTITY AND ACCESS

Clarity on Goals: Begin with the End in Mind

Identify Stakeholders:

Map Access Based on Needs

Efficiency

Improved User Experience





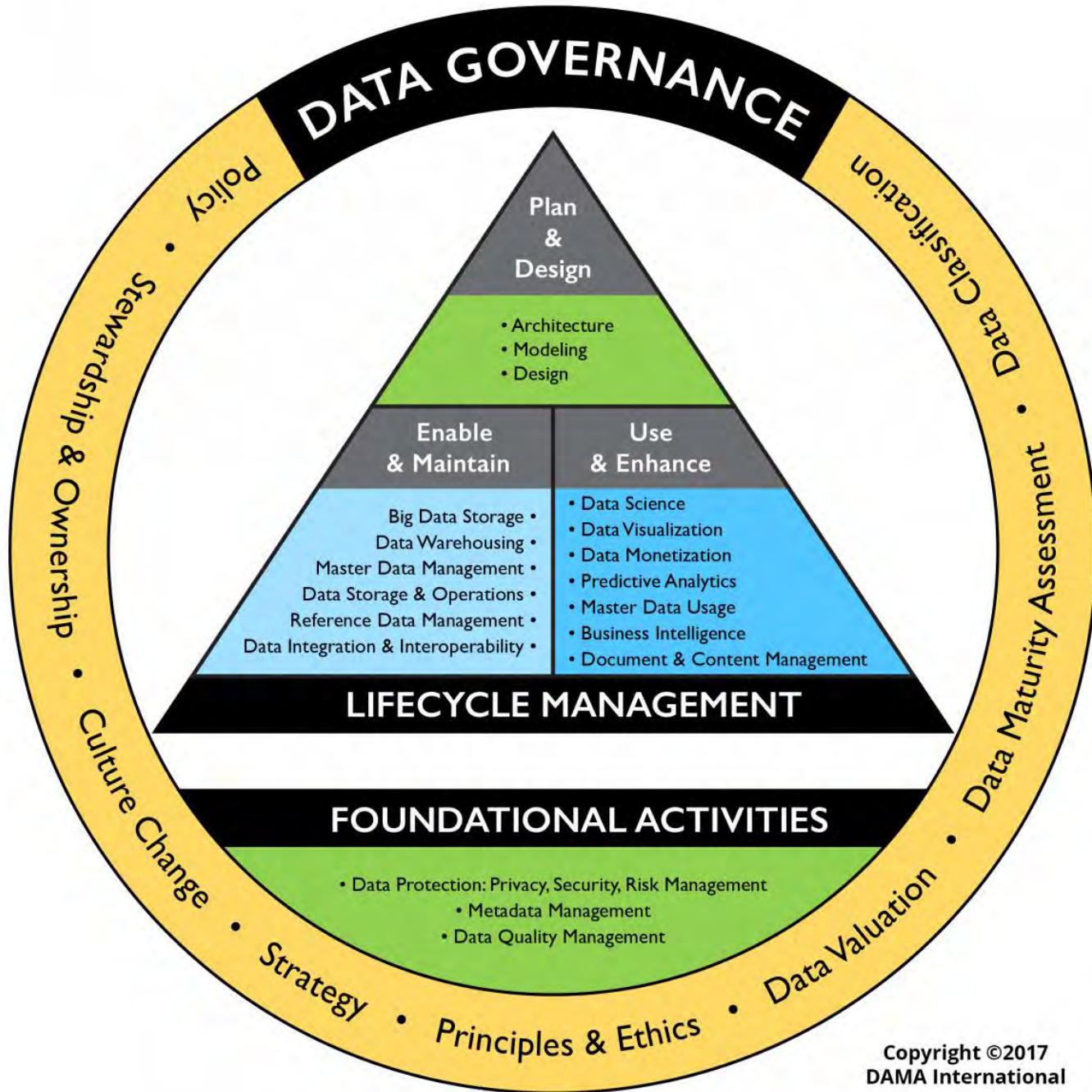


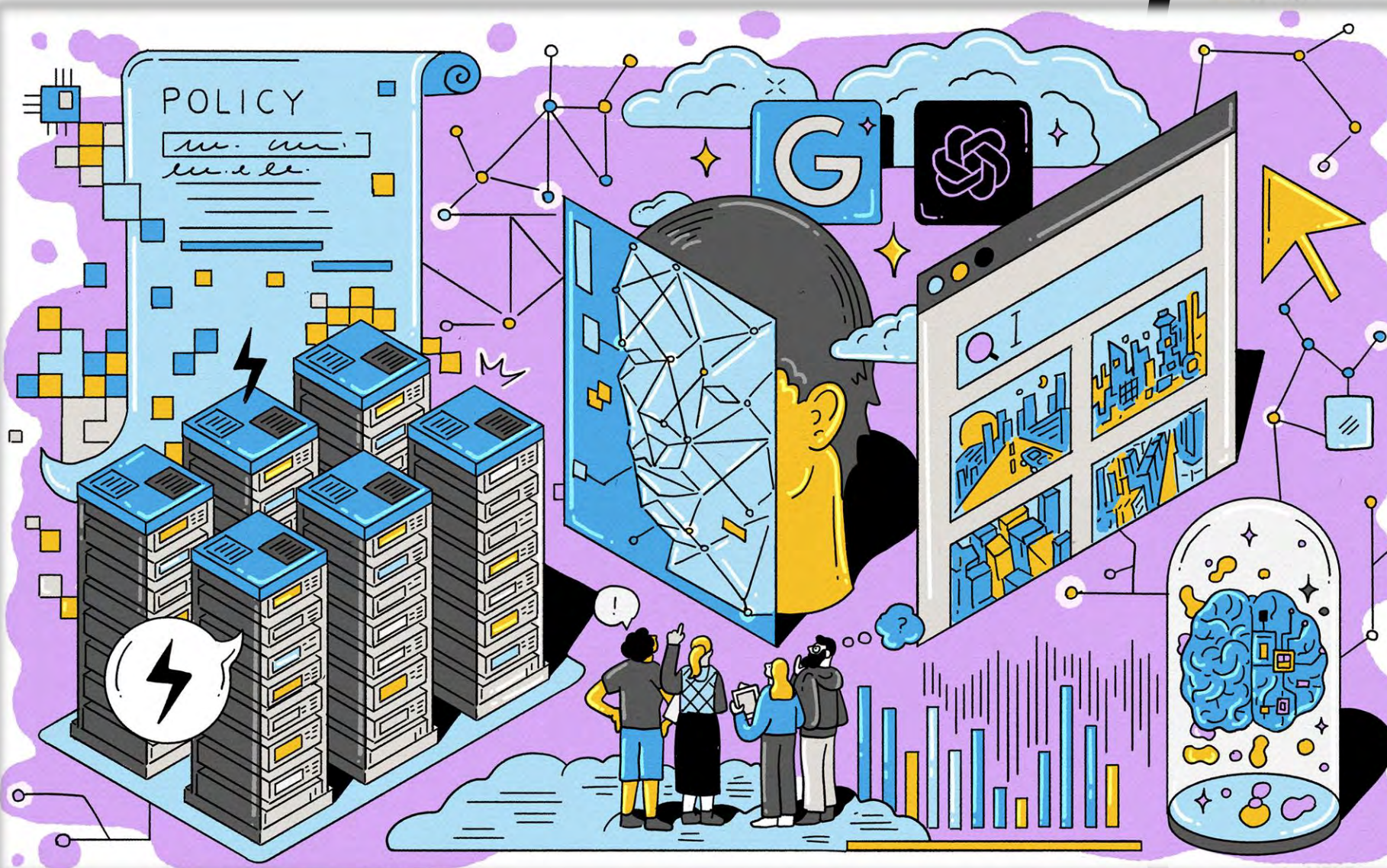












News

Diffuse to Choose, a diffusion-based image-generating model that allows users to virtually place any element in any setting, ensuring detailed, semantically coherent results. Code and demo will be available soon.

Two new embedding models, new GPT-4 Turbo and new API usage management tools, and lower prices. The updated GPT-4 Turbo pricing includes a "pay as you go" model where the model charges per token. Other models include GPT-4o, GPT-4o mini, and GPT-4o audio.

Google's **'poisons'** AI models, is now available. [Details](#).

Google's **LM 2 1.6B**, 1.6 billion parameter small language model trained on multilingual data in English, Spanish, Portuguese, and Dutch. Stable LM 2 1.6B is available commercially and non-commercially with a license. [Details](#).

Google's **'code'**, an AI-powered feature designed to generate gift ideas based on specific preferences.

14. **Google DeepMind** presented **AutoRT**, a framework that uses foundation models to scale up the deployment of operational robots in completely unseen scenarios with minimal human intervention. In AutoRT, a VLM describes the scene, an LLM generates a plan, and filters for affordance and safety, then

Illustration by Kathleen Fu for TIME January 11, 2024